



8 Dean Ryle Street, Westminster
London SW1P

GARTONJONES.COM



8 Dean Ryle Street, Westminster
London, SW1P

GARTON JONES.COM

49 Marsham Street Lettings:
London +44 (0) 20 7340 0480
SW1P 3DP westminster@gartonjones.com
www.gartonjones.com

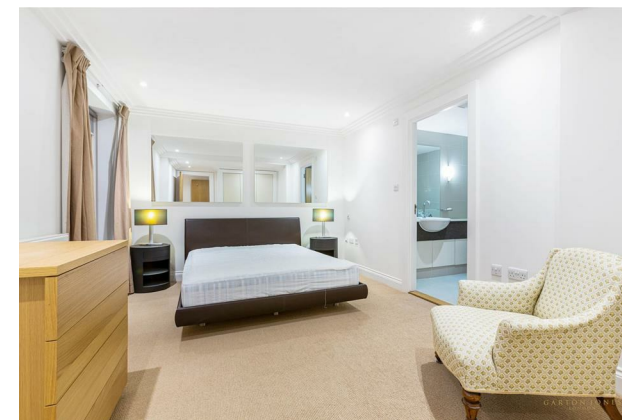
£1,000 Per Week

A bright and spacious 3 bedroom apartment located on the 2nd floor (lift) available to let in this secure popular development in the heart of Westminster. The living space comprises of an impressive reception room, separate modern integrated kitchen, three double bedrooms with the master benefiting from an en-suite bathroom, a further guest bathroom and ample fitted storage. Residents of Westminster Green benefit from a 24 hour concierge, business suite, gymnasium and there is a secure underground parking space (under separate negotiation). Dean Ryle Street is extremely convenient for access to many of the renowned local landmarks which include the Houses of Parliament, Westminster Abbey, Tate Britain Gallery and the River Thames. The local transport links of Victoria Station is nearby providing mainline UK services including the Gatwick Express as well as the underground services of Victoria, Pimlico, St James Park and Westminster. The area has an abundance of amenities such as Sainsbury's, Waitrose, Marks & Spencer's, The Cinnamon Club, Osteria Dell'angolo and many more. Just a stones throw away is St Johns Smith Square Concert Halls offering a variety of classical musical performances.

**Please note that the furniture may differ to that shown in the current photos.

EPC Rating B (85)
Council Tax Band G (London Borough of Westminster)
Minimum Term 12 Months
Deposit 5 Weeks

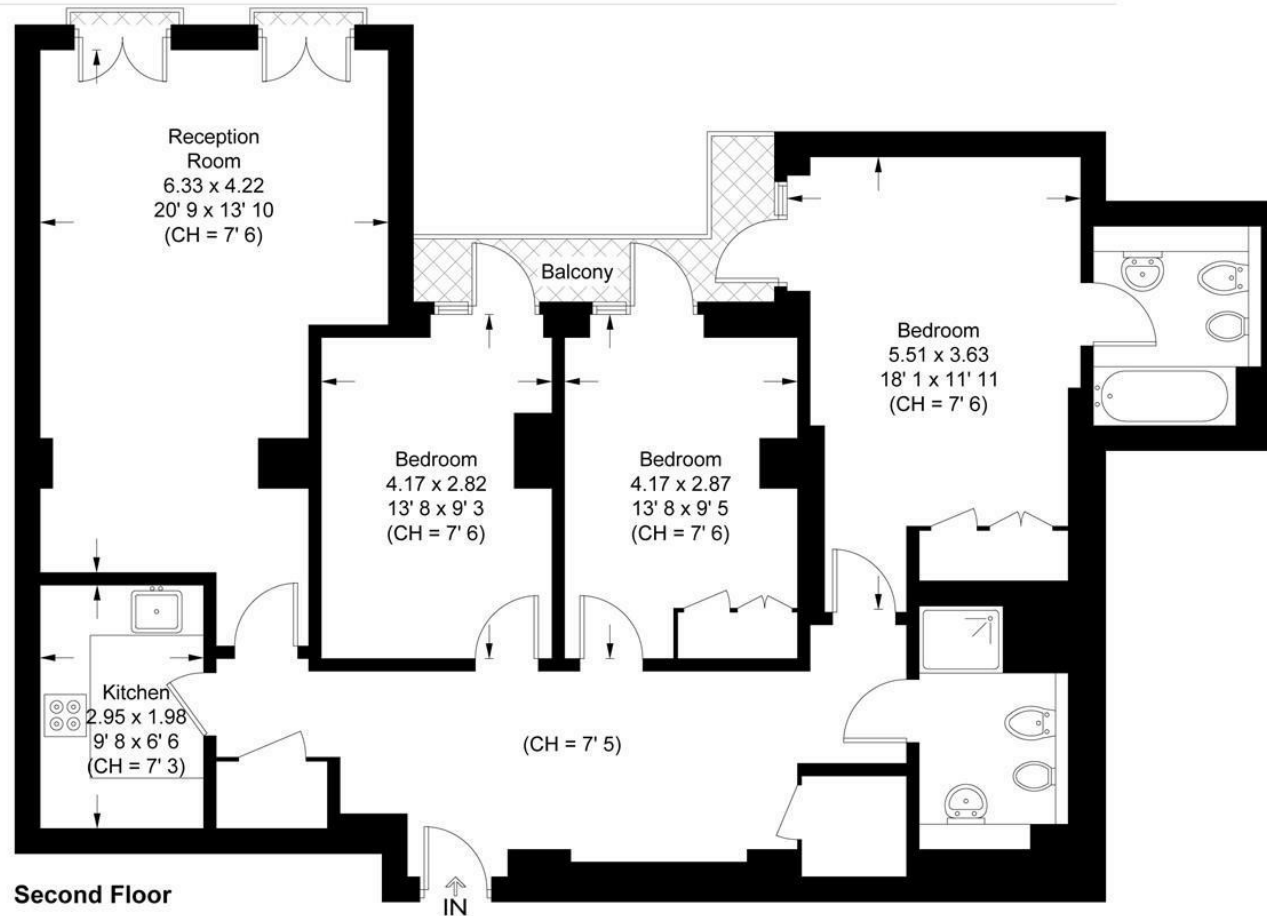
- 3 Bedroom Apartment
- 1158 Sq. Ft (107.6 Sq.M)
- Reception Room
- Separate Modern Integrated Kitchen
- 2 Bathrooms (One Is En-Suite)
- Furnished
- 24 Hour Concierge
- Residents Meeting Rooms & Gymnasium
- Close to Local Amenities Including Shops and Restaurants
- Walking Distance to St James` Park & Westminster Tube Links



Westminster Green

Approximate Gross Internal Area = 1158 sq ft / 107.6 sq m

GARTON JONES
LONDON



This plan is not to scale and must be used as layout guidance only. All measurements and areas are approximate and should not be relied upon to provide accurate information. This plan must not be relied upon when making property valuations, design considerations or any other such relevant decisions. We accept no responsibility or liability (whether in contract, tort or otherwise) in relation to any loss whatsoever arising from or in connection with any use of this plan or the adequacy, accuracy or completeness of it or any information within it.



